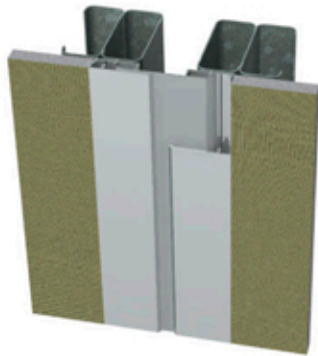


Tech Data Sheet

H Series

Expansion Joint Cover System



H20-51-14 Illustrated

Description:

The H Series is a snap-on cover system with a glide plate design for wall and ceiling expansion joint applications. The snap-on device has a hidden fastener to provide continuous mechanical attachment of the metal cover plate to the substrate. These allow plus and minus 50-100% thermal movement in nominal expansion joint gaps of 1" to 12".

Options:

Wall to Wall, Corner Wall, Ceiling to Ceiling and Ceiling to Wall, bronze, stainless steel, clear anodized, color anodized, Custom Painted and next generation finishes.

Typical applications:

Interior wall applications for CMU and drywall in either surface or flush mounted conditions.