

## INSTALLATION INSTRUCTIONS

Each installation may have unique situations that cannot be covered by the following guidelines. Please call 1-800-835-0028 if you have questions.

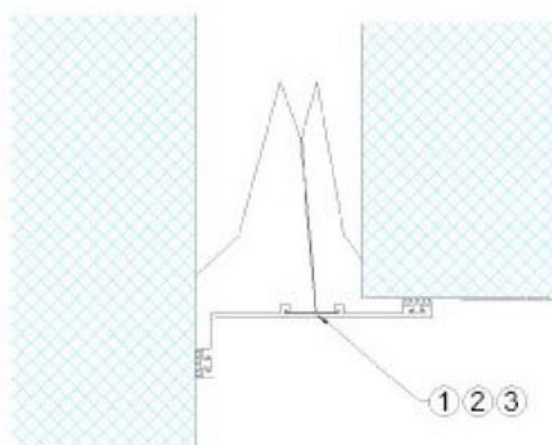
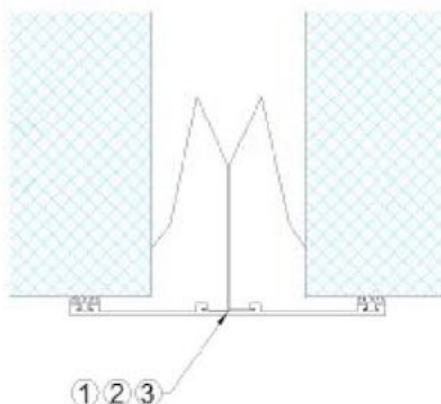
# G01

REV 10/06

Step 1: Slide spring clip assemblies into aluminum cover track.

Step 2: Locate spring clips at approximately 4" from each end of the assembly and approximately 1'-6" on center.

Step 3: Push cover with spring clips installed into expansion joint opening, making sure spring engages the ceiling or wall structure.



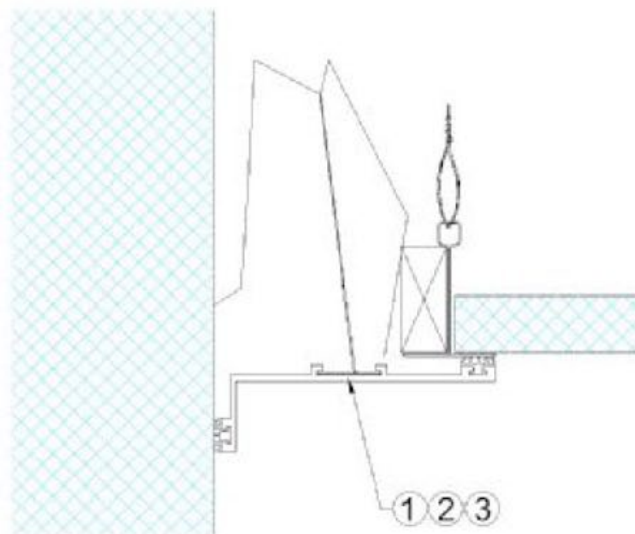
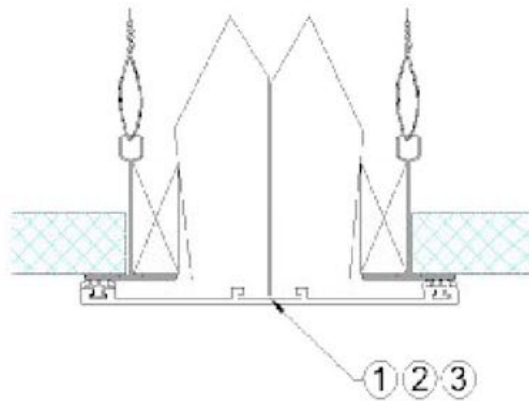
### INSTALLATION INSTRUCTIONS

Each installation may have unique situations that cannot be covered by the following guidelines. Please call 1-800-835-0028 if you have questions.

# G02

REV 10/06

- Step 1: Slide spring clip assemblies into aluminum cover track.
- Step 2: Locate spring clips at approximately 4" from each end of the assembly and approximately 1'-6" on center.
- Step 3: Push cover with spring clips installed into expansion joint opening, making sure spring engages the ceiling or wall structure.



## INSTALLATION INSTRUCTIONS

Each installation may have unique situations that cannot be covered by the following guidelines. Please call 1-800-835-0028 if you have questions.

# G03

REV 10/06

**Step 1:** Drill  $\frac{3}{16}$ " holes 4" from each end of the anchor extrusion, then approximately 1'-6" on center on the balance of the piece. Use the drill track in the raised area of extrusion to drill.

**Step 2:** Mount spring clip into the "T" shaped retainer and insert into the anchor extrusion slot from the ends. Line up springs with drilled holes.

**Step 3:** Place anchor extrusion at wall or ceiling and mark for drilling holes.

**Step 4:** Drill  $\frac{3}{16}$ " holes corresponding to holes in anchor extrusion to minimum depth of 1" into wall, making sure that they are set to a straight line.

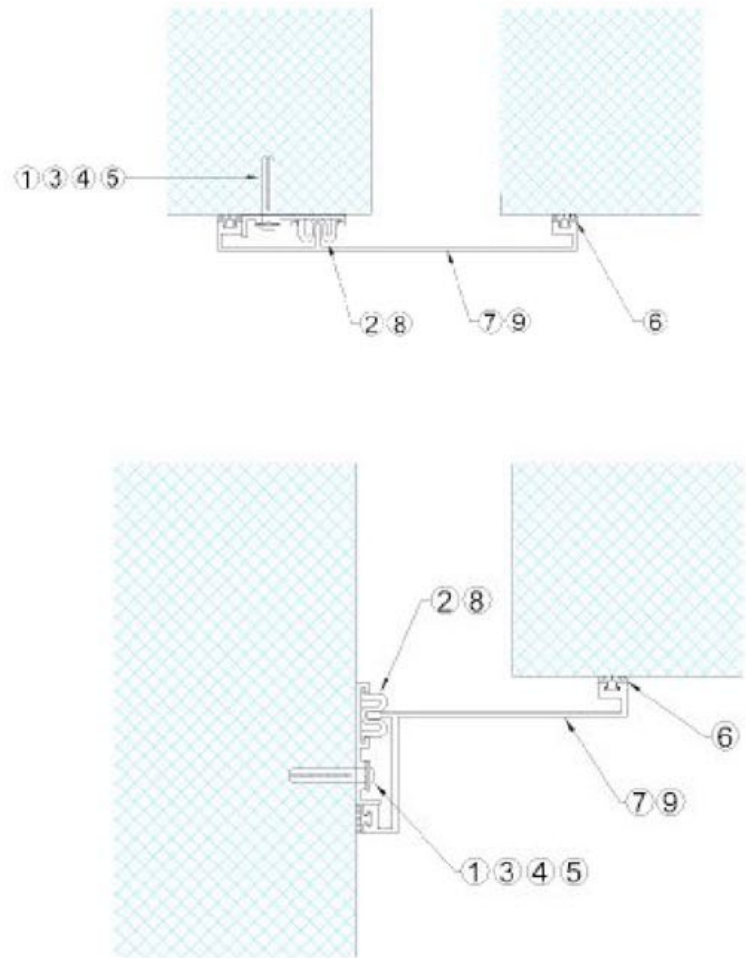
**Step 5:** Push nylon anchors through holes in anchor extrusion into wall and drive tight.

**Step 6:** Check to be sure vinyl seals are in position on cover plate.

**Step 7:** Position cover plate and mark location of cups on protective covering to indicate where pressure should be applied to snap cover into spring clips. This is important, as once the clips are locked, it is difficult to remove the cover without damage.

**Step 8:** Apply bonding gel to the inside walls of retaining clip.\*

**Step 9:** Place cover plate in position, making sure cover is next to edge on anchor extrusion. To lock cover, tap on edge of cover using wood block for protection of metal finish.



\* We recommend any of the following four Loctite bonding gels:

1. Loctite Super Glue Gel
2. Loctite Super Glue Gel Control
3. Loctite Super Glue Gel Professional
4. Loctite Super Glue Ultra Gel Control