

A SERIES

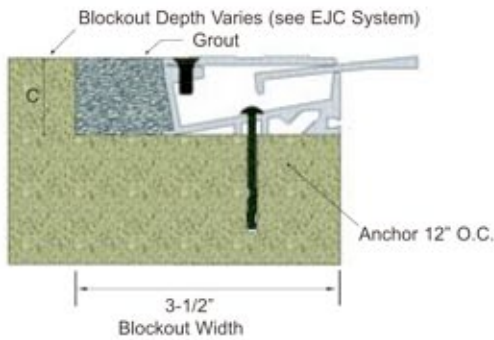


The A Series is a glide plate system designed for floor expansion joint applications. It is an all metal product allowing plus and minus 50-100% movement in nominal expansion joint gaps of 1 to 6 inches.

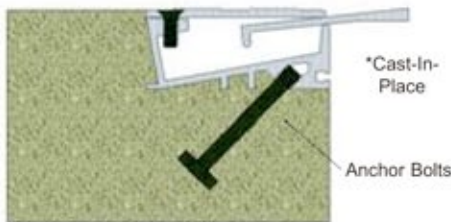
Options: Floor to Floor, Floor to Wall, *Cast-in-place, Surface Mount, New to Existing, Recessed, Serrated, Hidden Sight Line, Aluminum, Bronze, Stainless Steel and Heavy Duty.

Typical applications: Interior Pedestrian, Hospital, pneumatic and hard wheel carts for thermal and seismic movements.

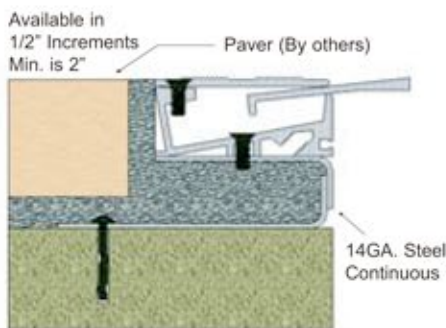
Standard Blockout Anchors



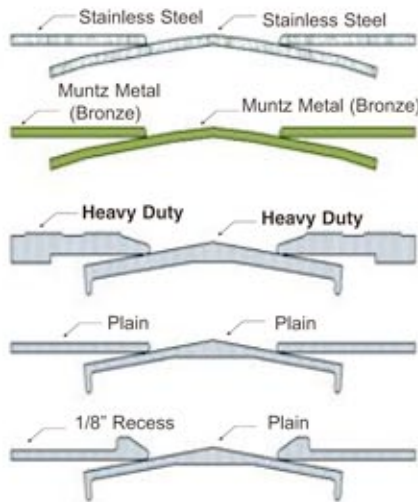
Optional Cast-in



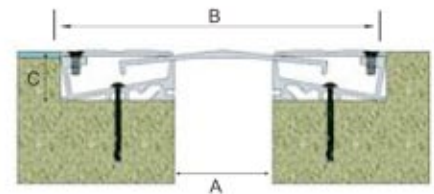
Optional Topping Slab



Floor to Floor

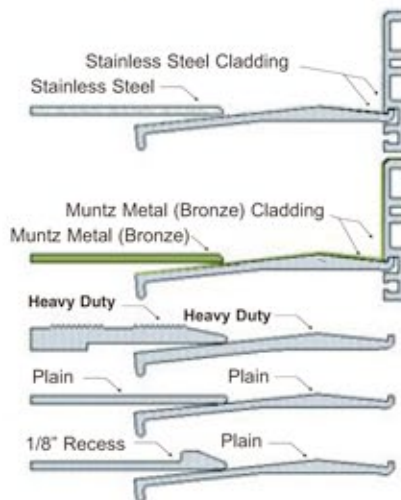


Floor to Floor



Floor to Floor System	A	B	C	Finish
A10-11-11	1	5-5/8	1	Serrated
A15-11-11	1-1/2	6-1/8	1	
A20-11-11	2	6-5/8	1	
A30-11-11	3	7-5/8	1	
A40-11-11	4	8-5/8	1	
A10-16-11	1	5-5/8	1	Recessed
A15-16-11	1-1/2	6-1/8	1	
A20-16-11	2	6-5/8	1	
A30-16-11	3	7-5/8	1	
A40-16-11	4	8-5/8	1	
A50-25-11	5	14	2	
A60-25-11	6	16	2	
A10-14-11	1	5-5/8	1-1/16	Plain Alum
A15-14-11	1-1/2	6-1/8	1-1/16	
A20-14-11	2	6-5/8	1-1/16	
A30-14-11	3	7-5/8	1-1/16	
A40-14-11	4	8-5/8	1-1/16	
A50-15-11	5	14	2	
A60-15-11	6	16	2	
A10-20-11	1	5-5/8	1-1/4	Heavy Duty
A15-20-11	1-1/2	6-1/8	1-1/4	
A20-20-11	2	6-5/8	1-1/4	
A30-20-11	3	7-5/8	1-1/4	
A40-20-11	4	8-5/8	1-1/4	
A10-11-21	1	5-5/8	1-1/16	Stainless
A15-11-21	1-1/2	6-1/8	1-1/16	
A20-11-21	2	6-5/8	1-1/16	
A30-11-21	3	7-5/8	1-1/16	
A40-11-21	4	8-5/8	1-1/16	
A50-16-21	5	14	2	
A60-16-21	6	16	2	
A10-11-31	1	5-5/8	1-1/16	Bronze
A15-11-31	1-1/2	6-1/8	1-1/16	
A20-11-31	2	6-5/8	1-1/16	
A30-11-31	3	7-5/8	1-1/16	
A40-11-31	4	8-5/8	1-1/16	
A50-15-31	5	14	2	
A60-15-31	6	16	2	

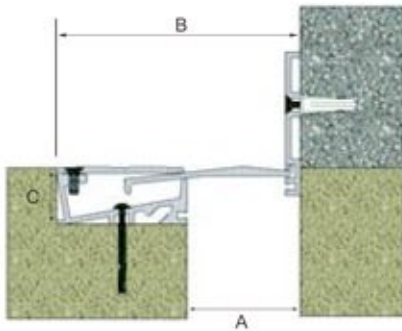
Floor to Wall



*Specify "Cast-in-place" with any model

A SERIES - continued

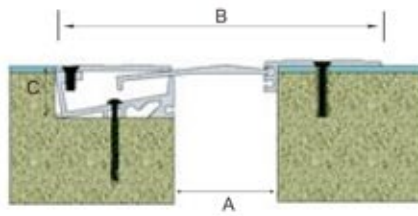
Floor to Wall



System	A	B	C	Finish
A10-31-11	1	3-5/16	1	Serrated
A15-31-11	1-1/2	3-13/16	1	
A20-31-11	2	4-5/16	1	
A30-31-11	3	5-5/16	1	
A40-31-11	4	6-5/16	1	
A10-34-11	1	3-5/16	1	Recessed
A15-34-11	1-1/2	3-13/16	1	
A20-34-11	2	4-5/16	1	
A30-34-11	3	5-5/16	1	
A40-34-11	4	6-5/16	1	
A50-35-11	5	9.5	2	
A60-35-11	6	11	2	
A10-35-11	1	3-5/16	1-1/16	Plain Alum
A15-35-11	1-1/2	3-13/16	1-1/16	
A20-35-11	2	4-5/16	1-1/16	
A30-35-11	3	5-5/16	1-1/16	
A40-35-11	4	6-5/16	1-1/16	
A50-45-11	5	9.5	2	
A60-45-11	6	11	2	
A10-40-11	1	3-5/16	1-1/4	Heavy Duty
A15-40-11	1-1/2	3-13/16	1-1/4	
A20-40-11	2	4-5/16	1-1/4	
A30-40-11	3	5-5/16	1-1/4	
A40-40-11	4	6-5/16	1-1/4	
A10-31-21	1	3-5/16	1-1/16	Stainless
A15-31-21	1-1/2	3-13/16	1-1/16	
A20-31-21	2	4-5/16	1-1/16	
A30-31-21	3	5-5/16	1-1/16	
A40-31-21	4	6-5/16	1-1/16	
A50-46-21	5	9-1/2	2	
A60-46-21	6	11	2	
A10-31-31	1	3-5/16	1-1/16	Bronze
A15-31-31	1-1/2	3-13/16	1-1/16	
A20-31-31	2	4-5/16	1-1/16	
A30-31-31	3	5-5/16	1-1/16	
A40-31-31	4	6-5/16	1-1/16	
A50-45-31	5	9-1/2	2	
A60-45-31	6	11	2	

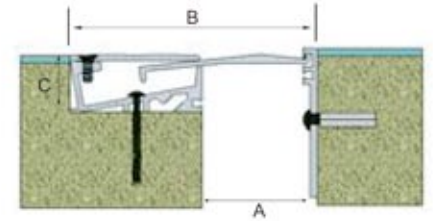
*Specify "Cast-in-place" with any model

Surface Mount



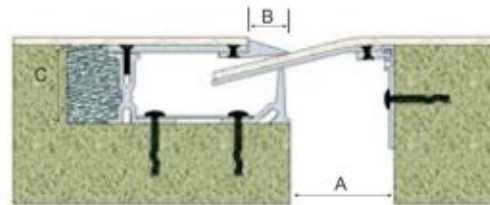
System	A	B	C	Finish
A10-13-11	1	5-5/8	1	Serrated
A15-13-11	1-1/2	6-1/8	1	
A20-13-11	2	6-5/8	1	
A30-13-11	3	7-5/8	1	
A40-13-11	4	8-5/8	1	
A10-15-11	1	5-5/8	1	Recessed
A15-15-11	1-1/2	6-1/8	1	
A20-15-11	2	6-5/8	1	
A30-15-11	3	7-5/8	1	
A40-15-11	4	8-5/8	1	
A10-18-11	1	5-5/8	1-1/16	Plain Alum
A15-18-11	1-1/2	6-1/8	1-1/16	
A20-18-11	2	6-5/8	1-1/16	
A30-18-11	3	7-5/8	1-1/16	
A40-18-11	4	8-5/8	1-1/16	

New to Existing



System	A	B	C	Finish
A10-33-11	1	3-5/16	1	Serrated
A15-33-11	1-1/2	3-13/16	1	
A20-33-11	2	4-5/16	1	
A30-33-11	3	5-5/16	1	
A40-33-11	4	6-5/16	1	
A10-37-11	1	3-5/16	1	Recessed
A15-37-11	1-1/2	3-13/16	1	
A20-37-11	2	4-5/16	1	
A30-37-11	3	5-5/16	1	
A40-37-11	4	6-5/16	1	
A10-38-11	1	3-5/16	1-1/16	Plain Alum
A15-38-11	1-1/2	3-13/16	1-1/16	
A20-38-11	2	4-5/16	1-1/16	
A30-38-11	3	5-5/16	1-1/16	
A40-38-11	4	6-5/16	1-1/16	

Carpet Floor



System	A	B	C	Finish
A10-17-11	1	3/4	2	Carpet
A15-17-11	1-1/2	3/4	2	
A20-17-11	2	3/4	2	
A30-17-11	3	3/4	2	
A40-17-11	4	3/4	2	
A50-46-21	5	3/4	2	
A60-17-21	6	3/4	2	