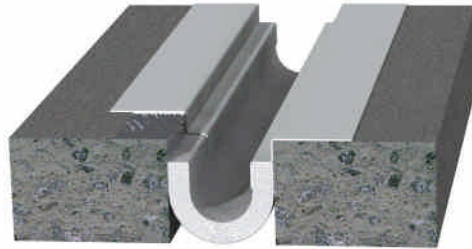




Architectural Art Mfg.
A division of Pittcon Architectural Metals, LLC

Tech Data Sheet

P Series Fire Barriers for Expansion Joint Cover Systems



P40-FF-02 Illustrated

Description:

The P Series are fire barrier systems designed for floor, wall and ceiling expansion joint applications. It is a mechanically attached life safety system that is designed to maintain the fire rating of the adjacent structure at the expansion joint opening. This is a component of a listed and labeled assembly adhering to testing criteria outlined in UL2079 requiring ratings for Flame, Heat and Air leakage and tested for movement, positive pressure and hose stream requirements. These typically accompany other expansion joint cover systems to provide a finished application.

Options:

Floor to Floor, Floor to Wall, for concrete applications. Wall to Wall, Wall to Ceiling, Ceiling to Ceiling, Ceiling to Wall for fire rated gypsum board applications. Available for joints sizes from 1" to 30" maximum openings.

Applications:

For use with Interior structures and open air structures.



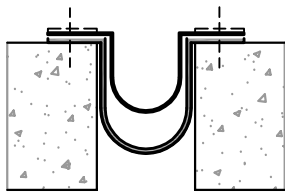
Architectural Art Mfg.
A division of Pittcon Architectural Metals, LLC

P30 Series Ultra Thin UL® Design:

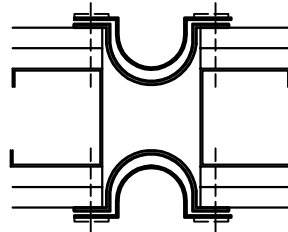
| | |
|------------------|---|
| Product(s): | P30 Series |
| Fire Ratings: | 1 and 2 Hour construction |
| Applications: | Floors and Walls |
| Construction: | Concrete, Gypsum |
| Joint Sizes: | 1" and 2" Nominal Joints |
| Movement: | Plus and minus 50% |
| Design Standard: | UL2079 |
| Tests: | Flame, Thermal, L air leakage, Hose Stream, Splice, Cycle UL2079 Class 1,2,3, ASTM E1399 Class 1,2,3, 4 |



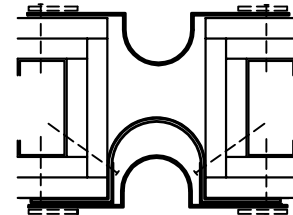
This versatile fire barrier can be installed in different configurations with the same material



P30-11-02 TOP MOUNT FLOOR
UL# FF-D-0072



P30-51-02 DUAL SIDE WALL
UL# WW-D-0087



P30-54-02 SINGLE SIDE WALL
UL# WW-D-0088

2 Hour construction shown. 1 Hour construction per UL Standards also allowable. See UL Listings.

Available for corner installations as well

Note: No EJ Cover Required for Fire Rating in floors or walls

| P30 SERIES Ultra Thin- SELECTION GUIDE | | | | | | | | | | |
|--|---------------|----|---------|-------|---------|----|----------------|----|----------------|-----------|
| DESIGNATION | JOINT OPENING | | | | | | TOTAL MOVEMENT | | Design Listing | |
| | MINIMUM | | NOMINAL | | MAXIMUM | | | | | |
| P30-11-02 | 0.5 | 13 | 1 or 2 | 25-50 | 3.0 | 75 | 2.5 | 64 | UL | FF-D-0072 |
| P30-51-02 | 0.5 | 13 | 1 or 2 | 25-50 | 3.0 | 75 | 2.5 | 64 | UL | WW-D-0087 |
| P30-54-02 | 0.5 | 13 | 1 or 2 | 25-50 | 3.0 | 75 | 2.5 | 64 | UL | WW-D-0088 |
| | | | | | | | | | | |

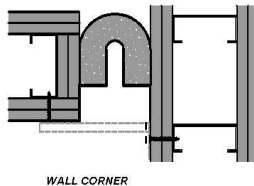
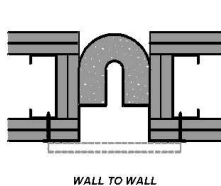
Bold numbers are in inches. Others are millimeter



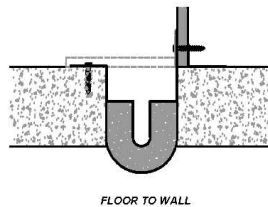
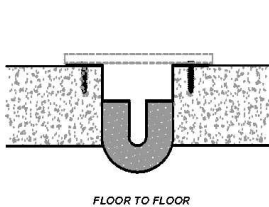
Architectural Art Mfg.
A division of Pittcon Architectural Metals, LLC

P Series UL® Designs up to 30" max JT:

Product(s): P Series 1" – 20" Nom JT (max 30" at 50% extension)
 Fire Ratings: 1 and 2 Hour construction
 Applications: Floors and Walls
 Construction: Concrete Floors, Gypsum or Block Walls
 Movement: Plus and Minus 50%
 Design Standard: UL2079
 Tests: Flame, Thermal, L air leakage, Hose Stream, Splice, Cycle UL2079 Class 1,2,3
 ASTM E1399 Class 1,2,3,4
 Listings: UL#'s see below



| | |
|-----------------------|----------------------|
| Wall Nom. Joint Sizes | UL Design# |
| 1-2" | WW-D-0065, WW-D-0066 |
| 3- 6" | WW-D-1059, WW-D-1060 |
| 8-12" | WW-D-2014, WW-D-2015 |
| 14-20" | WW-D-3013, WW-D-3014 |



| | |
|------------------------|----------------------|
| Floor Nom. Joint Sizes | UL Design# |
| 1-2" | FF-D-0003, FF-D-0057 |
| 3- 6" | FF-D-1009, FF-D-1069 |
| 8-12" | FF-D-2001, FF-D-2010 |
| 14-20" | FF-D-3001, FF-D-3010 |

2 Hour construction shown. 1 Hour construction per UL Standards also allowable. See UL Listings.
Note: EJ Covers are Required for Fire Rating at floors and walls

| P SERIES UL up to 30" Max JT - SELECTION GUIDE | | | | | | | | | | |
|--|---------------|----|---------|--------|---------|-----|----------------|----------------|----|--|
| DESIGNATION | JOINT OPENING | | | | | | TOTAL MOVEMENT | Design Listing | | |
| | MINIMUM | | NOMINAL | | MAXIMUM | | | | | |
| P()-FF-02 | 0.5 | 13 | 1- 20 | 25-508 | 30.0 | 762 | 50% | | UL | |
| P()-FW-02 | 0.5 | 13 | 1- 20 | 25-508 | 30.0 | 762 | 50% | | UL | |
| P()-WW-02 | 0.5 | 13 | 1- 20 | 25-508 | 30.0 | 762 | 50% | | UL | |
| P()-WC-02 | 0.5 | 13 | 1- 20 | 25-508 | 30.0 | 762 | 50% | | UL | |

Bold numbers are in inches. Others are millimeter